

MALO Batten (Integrated)

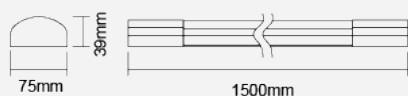


White

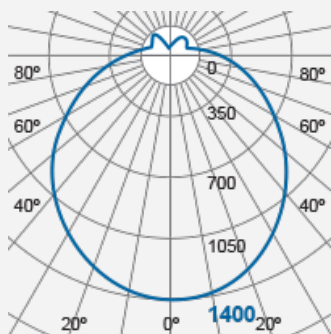


IP20

Class II



Integrated LED Luminaire
FIB70200v1



Product Code:

FIB70200v1

Electrical Data

Voltage (V)	220-240V
-------------	----------

Product Data

Product Wattage (W)	42
Beam Angle (°)	110
Colour Temperature (K)	Warmwhite (3000K), Coolwhite (4000K), Daylight (6500K)
Colour Render Index (Ra)	>Ra80
Colour	White (WH12)
Materials	Polycarbonate
Protection Class	Class II
Dimmable	No
Operating Temperature	-30 ° C to +40 ° C
Weight (g)	928
Application	Cabinets, Corridors and Staircases, Factories, Residential, Warehouses

Performance Data

Luminous Flux (lm)	4500
Luminous Efficacy (lm/W)	107
Rated Life (hrs)	50000
IP Rating	IP20

Product Dimensions

Length (mm)	1500
Width (mm)	75
Height (mm)	39

Product Code: FIB70200v1

MEGAMAN® 2005-2018. All Rights Reserved.
This document is for informational purpose only.

MEGAMAN® reserves the right to make changes from time to time in the interest of product developments without prior notification to any products herein.

www.megaman.cc

Page 1 of 2

m	Lux	Ø cm
0.5	5600	143
1	1400	286
1.5	622	428
2	350	571

Beam angle = 110°