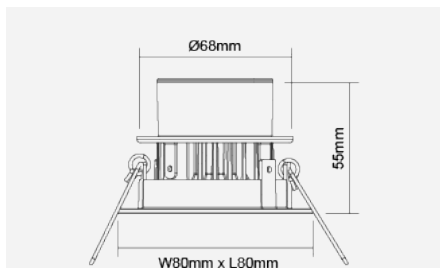
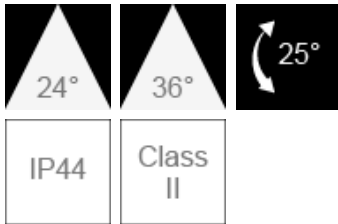
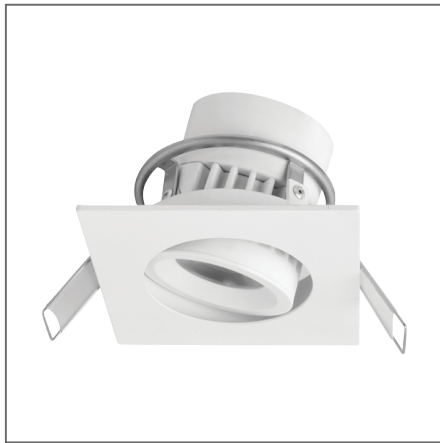


SIENA Adjustable Recessed Downlight (Integrated) DIMMABLE



Integrated LED Luminaire
F29500RC-d-24 °

Product Code:

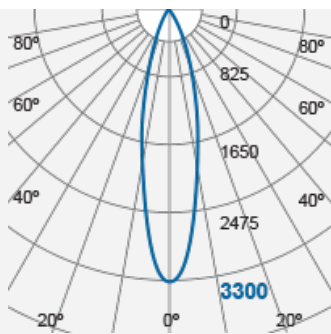
F29500RC-d

Electrical Data	
Voltage (V)	220-240V
Product Data	
Product Wattage (W)	8
Beam Angle (°)	24, 36
Tilting Angle (°)	25
Colour Temperature (K)	Warmwhite (2800K), Coolwhite (4000K)
Colour Render Index (Ra)	>Ra80
Colour	White (WH26), Silver (SV26), Brushed Nickel (NI53)
Materials	Metal housing with diffuser
Protection Class	Class II
Dimmable	100-10%
Weight (g)	220
Performance Data	
Max. Luminous Intensity (cd)	3300 [24 °], 1800 [36 °]
Luminous Flux (lm)	500
Luminous Efficacy (lm/W)	63
Rated Life (hrs)	25000
IP Rating	IP44
Product Dimensions	
Length (mm)	80
Width (mm)	80
Height (mm)	55
Cut-out (mm)	Ø68
Remarks: Capable of linear dimming from 100% to 10% when working with most conventional dimmers. Please refer to the compatible dimmer list at www.megaman.cc/user-guide for further details.	

Product Code: F29500RC-d

MEGAMAN® 2005-2018. All Rights Reserved.
This document is for informational purpose only.

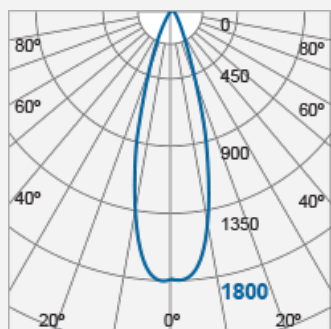
MEGAMAN® reserves the right to make changes from time to time in the interest of product developments without prior notification to any products herein.
www.megaman.cc



m	Lux	Ø cm
0.5	13200	21
1	3300	43
1.5	1467	64
2	825	85

Beam angle = 24°

F29500RC-d-36 °



m	Lux	Ø cm
0.5	7200	32
1	1800	65
1.5	800	97
2	450	130

Beam angle = 36°

Product Code: F29500RC-d

MEGAMAN® 2005-2018. All Rights Reserved.

This document is for informational purpose only.

MEGAMAN® reserves the right to make changes from time to time in the interest of product developments without prior notification to any products herein.

www.megaman.cc